

*Consistently clear, hard ice from a compact, efficient icemaker.*

### SmartIce™ event driven operation system

- Touchscreen controls for easy operation
- Easy to read 9" display
- Easy to navigate menus
- Ice thickness selector
- Review maintenance schedules
- Troubleshooting
- Ability to add ingredients for unique applications

### Control Inputs / Outputs

- Take away augers
- Bin full indicator

### Standard Features

- Stainless steel framework on all models
- Stainless steel vessel and water distribution box
- Stainless steel sanitary water pump with washdown duty motor
- Stainless Steel water and refrigeration piping
- Clear ice and water saver system
- Multiple ice diameters available
- Surge drum and level control
- Suction, liquid and hot gas valves

### Optional Features

- Patented\* stainless steel cutter assembly
- Ladder and platform
- Urethane insulated white fiberglass panels and gas cylinder door hinges for outside installations

### Water Saver System

Less energy to operate and 60% less blow-down water than traditional overflow models

### Multiple Safeties

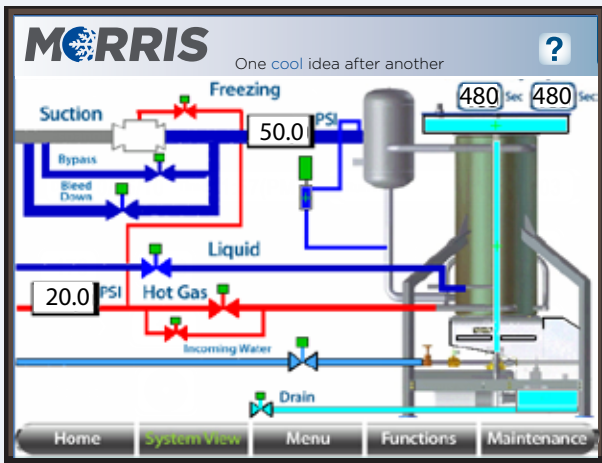
virtually eliminate downtime

- Ice chute Bin-D-Cator™
- Liquid level safety
- Pressure safety
- Water pressure safety

### 24/7 Service & Parts Support

Contact a live Morris representative around the clock for field service or parts support at 1.919.582.9200.





## Specifications

Model	Nominal Tons <sup>1</sup>	Water Usage <sup>2</sup>	Dimensions ft [m]			Vessel Size ft [m]	Water Pump HP	Approx. Shipping Weight lb [kg]	Approx. Operating Weight lb [kg]
			L	W	H <sup>3</sup>				
CIM-R#-2607**-***	25	5,810	5' 0" [1.5]	4' 10" [1.5]	9' 8" [2.5]	26"x5' [0.7x1.5]	3	3,200 [1450]	4,200 [1900]
CIM-R#-2610**-***	35	10,167	6' 0" [1.8]	6' 3" [1.9]	16' 3" [4.5]	26"x10' [0.7x3.0]	5	8,000 [3650]	10,500 [4800]
CIM-R#-3010**-***	55	14,523	6' 0" [1.8]	6' 3" [1.9]	16' 3" [4.5]	30"x10' [0.7x3.0]	5	10,400 [4750]	12,400 [5650]
CIM-R#-3610**-***	75	20,336	6' 0" [1.8]	6' 3" [1.9]	16' 3" [4.5]	36"x10' [0.9x3.0]	7.5	11,000 [5000]	14,000 [6350]
CIM-R#-3615**-***	110	29,051	6' 0" [1.8]	6' 3" [1.9]	21' 3" [6.1]	36"x15' [0.9x4.6]	7.5	14,000 [6350]	18,000 [8200]

Notes:

# Refrigerant Type: A = Ammonia (R-717), 5 = R-507

\*\* NC = No Cutter

\*\*\* Ice Diameter: 078=7/8", 100=1", 118=1-1/8", 138=1-3/8"

1 Tons based on R-717 at 10°F suction temperature and 95°F ambient with 60°F inlet water. Contact Morris for R-507 specifications.

2 Gallons per 24 hours. Water usage based on 10% blow-down.

3 Height noted is to the top of the ice maker. Surge drum extends 15" higher.

Information subject to change without notice.

Morris & Associates, Inc.  
 803 Morris Drive | Garner, NC 27529  
 Phone: 1.919.582.9200  
[www.morris-coolideas.com](http://www.morris-coolideas.com)

\*For patent information, see [morris-associates.com/innovation](http://morris-associates.com/innovation)

P/N: 8090-0006-00 Rev. 20210104