

Producing the perfect ice for any industry. Adjustable thickness and a wide variety of capacities to suit individual site needs.



Standard Features

- Ice thickness adjusts from 1/8" to 5/8"
- HMI touchscreen controls provides ease of operation
- 10-Year warranty on evaporator tubes
- Clear-coated, structural aluminum framework
- Stainless steel sump, auger, and discharge chute
- Shell and tube condenser/ receiver on water cooled units
- 12 - 16 ton units feature semi-hermetic compressors
- 25 - 42 ton units feature open-drive industrial reciprocating compressors

- Fully assembled electrical panel with starters, programmable controller, safety switches and controls
- Urethane insulated panels and doors with aluminum framework and gas cylinder door hinges

Touch Screen Controls

- Track maintenance by receiving notification at service intervals
- Maintenance service records
- Remote start and stop
- Harvest sequencing
- History page shows trends such as discharge and suction pressure

Popular Industry Uses

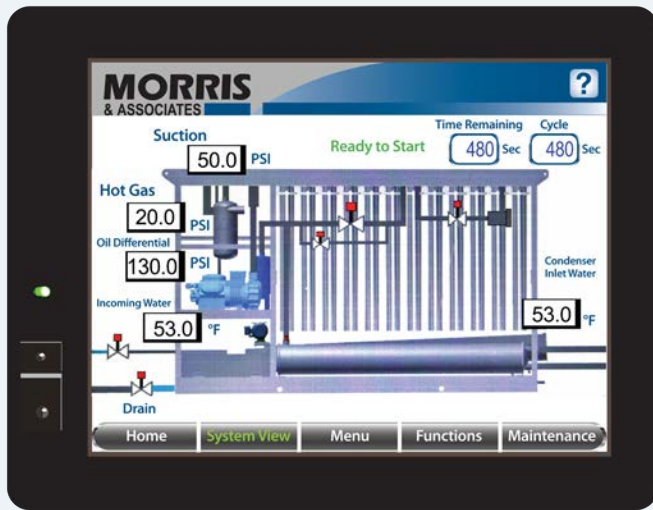
Packaged Ice
Concrete
Poultry
Seafood
Fresh Produce
Pharmaceuticals

Optional features

- Cupronickel condensers
- Winterizing kits

24/7 Service & Parts Support

Contact a live Morris representative around the clock for field service or parts support at +1.919.582.9200.



Specifications

Model Number	Nominal Tons Ice ¹	Motor HP			Approx. Outside Dimensions			Aprox. Shipping Weight ² lb [m]	Make-up Water GPH ³
		Compressor	Conveyor	Water Pump	L	W	H		
NIM-1205-P9-050	12	50	2	1/2	13'9" [4.2]	2'11" [0.9]	7'8" [2.3]	4,650 [2120]	132
NIM-1605-P9-060	16	60	2	1/2	17'10" [5.4]	3'2" [1.0]	7'8" [2.3]	5,950 [2700]	176
NIM-1608-P9-100	25	100	3	1	21'3" [6.5]	4'11" [1.5]	11'10" [3.6]	8,800 [4000]	275
NIM-2008-P9-125	32	125	3	2	24'3" [7.4]	4'11" [1.5]	11'10" [3.6]	10,300 [4700]	375
NIM-2608-P9-150	42	150	(2) 3	2	21'0" [6.4]	6'6" [2.2]	12'0" [3.7]	12,420 [5650]	465

Notes:

- Refrigerant Type: 9=R-438A
- 1 Capacity based on R-438A at 5° F suction temperature and 95°F ambient with 60°F inlet water.
- 2 Cooling tower or evaporative condenser separate.
- 3 Gallons per hour. Water usage based on 10% blowdown.
- NH3 systems also available.

Morris & Associates, Inc.
 803 Morris Drive | Garner, NC 27529
 Phone: 1.919.582.9200
www.morris-coolideas.com