

Producing the perfect ice for any industry. Adjustable thickness and a wide variety of capacities to suit individual site needs.



Standard Features

- Ice thickness adjusts from 1/8" to 5/8"
- HMI touchscreen controls provides ease of operation
- 10-Year warranty on evaporator tubes
- Clear-coated, structural aluminum framework
- Stainless steel sump, auger, and discharge chute
- Shell and tube condenser/ receiver on water cooled units
- 12 - 16 ton units feature semi-hermetic compressors
- 25 - 50 ton units feature open-drive industrial reciprocating compressors
- 80 - 100 units to be installed on central ammonia system

- Fully assembled electrical panel with starters, programmable controller, safety switches and controls
- Urethane insulated panels and doors with aluminum framework and gas cylinder door hinges

Touch Screen Controls

- Track maintenance by receiving notification at service intervals
- Maintenance service records
- Remote start and stop
- Harvest sequencing
- History page shows trends such as discharge and suction pressure

Popular Industry Uses

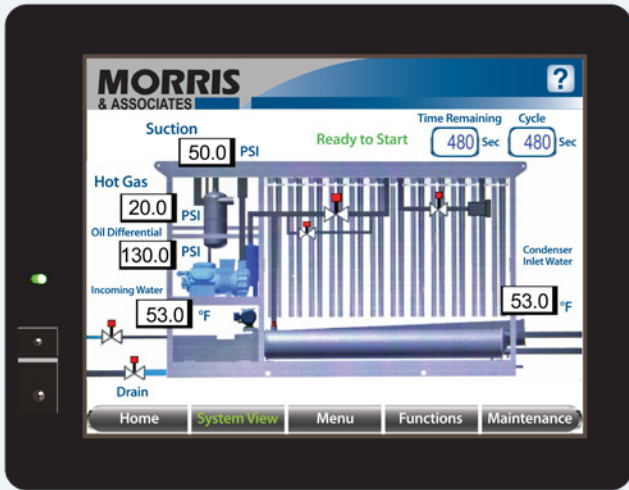
Packaged Ice
Concrete
Poultry
Seafood
Fresh Produce
Pharmaceuticals

Optional features

- Cupronickel condensers
- Winterizing kits

24/7 Service & Parts Support

Contact a live Morris representative around the clock for field service or parts support at +1.919.582.9200.



Specifications

Model Number	Nominal Tons Ice	Motor HP			Approx. Outside Dimensions			Aprox. Shipping Weight lb [kg]	Make-up Water GPH
		Compressor	Conveyor	Water Pump	L	W	H		
NIM-P9-1205-050	12	50	2	0.5	13'9" [4.2]	4'1" [1.2]	7'8" [2.3]	4500 [2041]	132
NIM-P9-1605-060	16	60	2	1	17'10" [5.4]	4'1" [1.2]	7'8" [2.3]	5,950 [2700]	176
NIM-PA-1605-100*	20	100	2	1	17'10" [5.4]	4'1" [1.2]	7'8" [2.3]	4000 [1814]	220
NIM-PA-1608-125*	32	125	3	1	18'6" [5.6]	4'1" [1.2]	11'7" [3.5]	5050 [2291]	352
NIM-PA-2008-125*	40	125	3	1	22'0" [6.7]	4'1" [1.2]	11'7" [3.5]	6600 [2994]	440
NIM-PA-2608DC-150*	50	150	3	1	16'5" [5.0]	6'10" [2.1]	11'7" [3.5]	8000 [3629]	550
NIM-RA-3208DC	80	N/A	3	1.5	18'6" [5.6]	6'10" [2.1]	11'8" [3.6]	9700 [4400]	879
NIM-RA-4008DC	100	N/A	3	1.5	22'11" [7.0]	6'10" [2.1]	11'9" [3.6]	12000 [5443]	1100

Notes:

Refrigerant Type: 9= R-438a, A = Ammonia (R-717)

- 1 R-438a Nominal capacity based on R-438a at 5°F suction temperature and 95°F ambient with 60°F inlet water
- 2 Packaged Ammonia (PA) Nominal capacity based on R-717 dedicated refrigeration system at 10°F suction temperature and 95°F ambient with 60°F inlet water temperature
- 3 Remote Ammonia (RA) Nominal capacity based on R-717 to be installed on central Ammonia (NH3) system at a 0°F suction temperature
- 4 Cooling tower or evaporative condenser separate
- 5 Gallons per hour. Water usage based on 10% blowdown

*Dimensions and weights are evaporator only. Packaged Ammonia (NH3) Refrigeration skid is separate enclosure.

Morris & Associates, Inc.
 803 Morris Drive | Garner, NC 27529
 Phone: 1.919.582.9200
www.morris-coolideas.com